

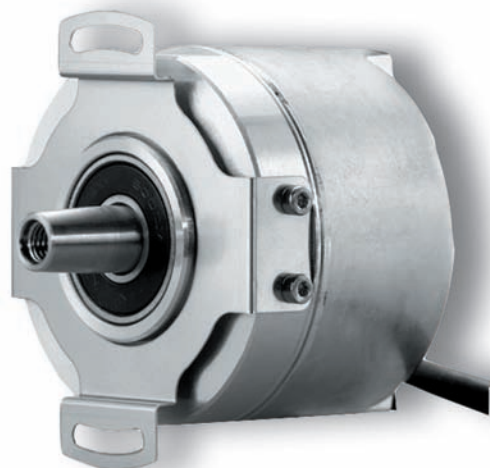
SERIES AD25

ACURO™ brand

Single- / Multi- Turn Absolute Encoder

Key Features

- **Special Conical Shaft for Concentric Motor Mounting**
- **Up to 22 Bits of Singleturn Absolute Positioning for Smooth Low Speed Motor Performance**
- **Integrated On-Board Diagnostics to Monitor Encoder Health**



SPECIFICATIONS

STANDARD OPERATING CHARACTERISTICS

Supply Voltage: 5 VDC, +10% / -5%

Current Consumption (w/o output current):

Single-turn: £ 45 mA (at 5V)

Multi-turn: £ 85 mA (at 5V)

Absolute Accuracy: ± 0.01° mechanical (36 arc-sec.)

Repeatability: ± 0.002° mechanical (7.2 arc-sec.)

Connection: 1 ft. Cable (30 cm)

Incremental Signals (SSI models only)

Resolution: 2048

Format: A, B Quadrature, 1 Vpp Sine wave

SSI Interface

Resolution:

Single-turn: 13 Bits

Multi-turn resolution: 12 Bits

Interface:

Number of lines: 4 unidirectional (2 for clock; 2 for data)

Electrical Interface: RS 422

Transmission speed: 70 kHz to 2 MHz per SSI definition

BiSS Interface

Resolution:

Single-turn resolution: 22 Bits

Multi-turn resolution: 12 Bits

Interface:

Signals: Clock unidirectional (from master to encoder);

Data unidirectional (from encoder to master)

Electrical Interface: RS 422

Number of lines: 4 unidirectional (2 for clock and 2 for data)

Transmission speed: 70 kHz – 10 MHz

Transmission security: 1 start bit, 1 stop bit, 6 Bit CRC

Diagnostic functions: possible failure modes are constantly checked with the following functions

LED current sensing: Pollution, condensation, over-temperature

Single-step check: Disk pollution or damage, condensation, mechanical overload

Temperature monitoring: Warning message if the user-defined limits have been reached/exceeded

For further information on the BiSS interface please consult: <http://www.biSS-ic.de/>

MECHANICAL

Shaft Size:

Tapered solid shaft: 10 mm diameter; Cone 1:10

Tapered hub shaft: 10 mm diameter; Cone 1:10

Shaft Loading: 5 lb axial, 20 lb radial

Shaft Speed: 10,000 RPM (continuous), 12,000 RPM (peak-ST only)

Starting Torque: < 1.4 in-oz

Weight: 6.2 oz.

Diameter: 2.28"

Length: 1.85"

ENVIRONMENTAL

Operating Temperature: -15 to +120° C

Storage Temperature: -25 to +85° C (due to packaging)

Enclosure Rating: IP40

Shock: 100 g's for 6 msec duration

Vibration: 10 g's (10 to 2000 Hz)

CONNECTIONS

PIN	1b	2b	3b	4b	5b	6b
Name	Power Supply (U _p)	Clock	B -	0 V (U _n)	A -	Data
Color	Gray/Pink	White	Red	White/Green	Yellow	Black
PIN	1a	2a	3a	4a	5a	6a
Name	Data	A +	0 V -Sen	B +	Clock	U _p Sensor
Color	Violet	Green	Brown/Green	Blue	Brown	Blue/Red

U_p = power Supply

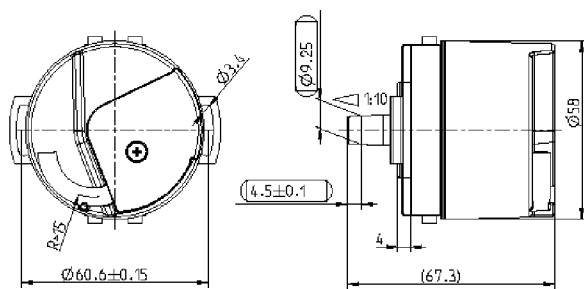
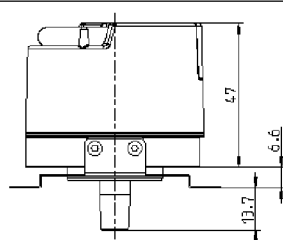
Sensor is connected to Power Supply and 0 V (U_n)

Shield connected to case

Ordering Information

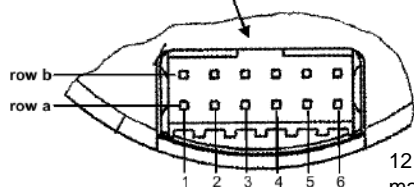
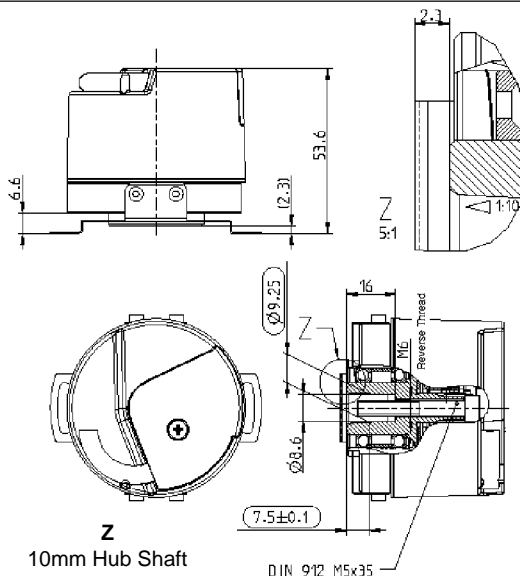
To order, complete the model number with code numbers from the table below:

Code 1: Model	Code 2: Bits	Code 3 :Mounting	Code 4: Shaft Size	Code 5: Protocol	Code 6: Electrical	Code 7: Connector
AD25	<input type="checkbox"/> <input type="checkbox"/> <input type="checkbox"/> <input type="checkbox"/>	<input type="checkbox"/>	<input type="checkbox"/>	<input type="checkbox"/>	<input type="checkbox"/>	<input type="checkbox"/>
AD25 Size25 Acuro Absolute Encoder	Single-Turn 0013 13 Bit 0022 22 Bit Multi-Turn 1213 12 Bit Multi-Turn, 13 Bit Single-Turn 1222 12 Bit Multi-Turn, 22 Bit Single-Turn	4 Spring Tether	Y 10mm Shaft (10:1 Taper) Z 10mm Hub Shaft (10:1 Taper)	Available when Code 2 is 0022 or 1222 A BiSS Available when Code 2 is 0013 or 1213 F SSI-Gray Code, + 1Vpp	0 5 VDC	M Drive cable, 1 foot (30 cm)

Dimensions (mm)**Code 4: Shaft Size**

10mm (10:1 taper) Shaft

PCB-Connector (12p)

12 pin PCB connector
manufacture Berg, type MinitekZ
10mm Hub Shaft

Worldwide Brands: NorthStar™ • Acuro™ • Dynapar™ • Hengstler™ • Harowe™
 Headquarters: 1675 Delany Road • Gurnee, IL 60031-1282 • USA • Phone: 1.847.662.2666 • Fax: 1.847.662.6633

Satellite Locations:

- **North America:** North Carolina, South Carolina, Connecticut, Massachusetts, New York, Canada, British Virgin Islands
- **West Indies:** St. Kitts • **Europe:** United Kingdom, Italy, France, Germany, Spain, Slovakia
- **South America:** Brazil • **Asia:** China, Japan, Korea, Singapore

Customer Service:

Tel.: +1.800.873.8731
 Fax: +1.847.662.4150
 custserv@dynapar.com

Technical Support

Tel.: +1.800.234.8731
 Fax: +1.847.782.5277
 dynapar.techsupport@dynapar.com

European Sales Representative

Hengstler GmbH
 Uhlandstrasse 49, 78554 Aldingen
 Germany
 www.hengstler.de